

Aid Call nurse call system connections.

To connect nurse call button

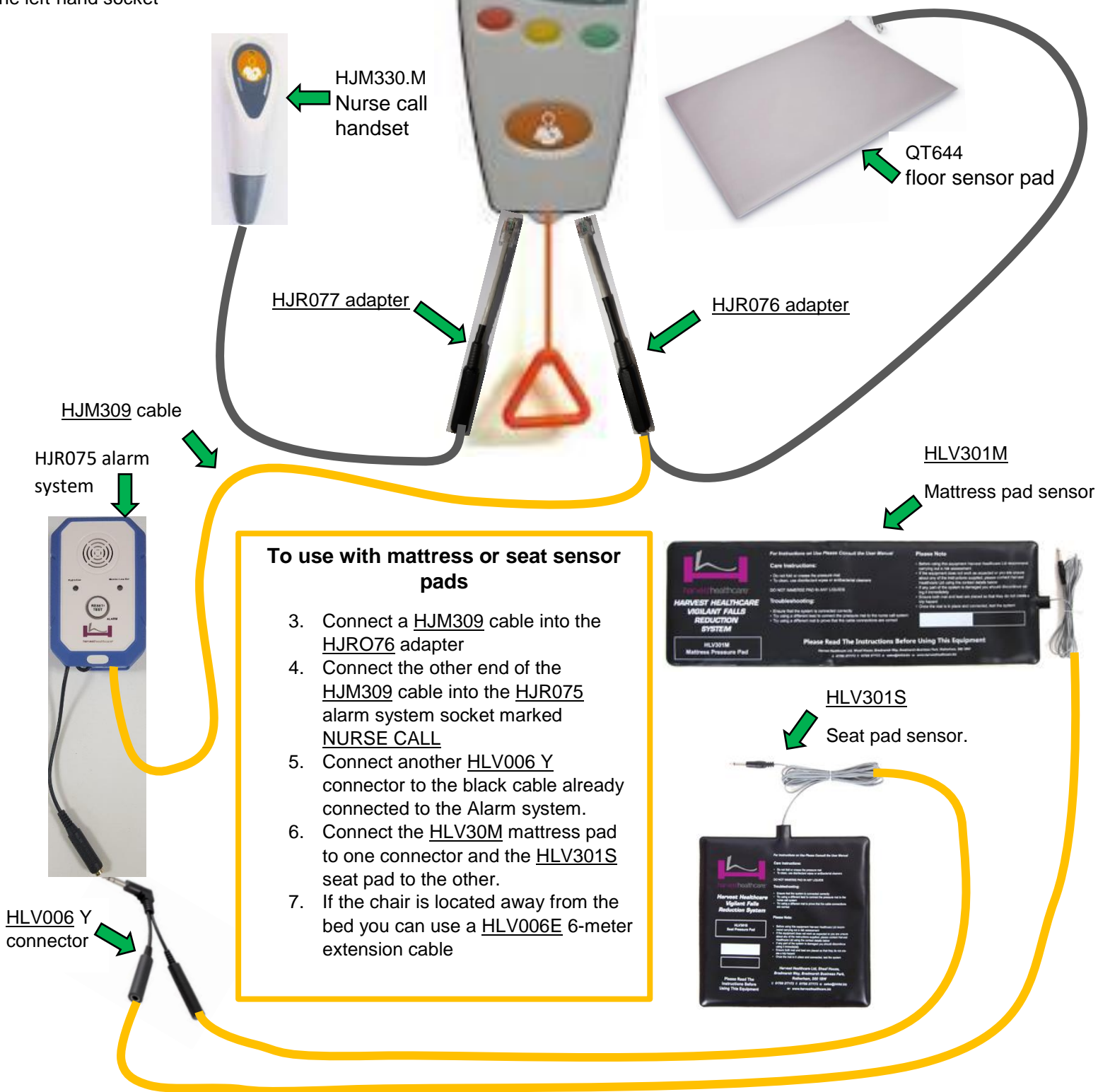
1. Connect a HJR077 adapter into the left-hand socket on the nurse call system.
2. Connect the HJM330.M nurse call button into the other end of the HJR077 adapter

To connect floor pressure pad

1. Connect a HJR076 adapter into right-hand socket of nurse call system.
2. Connect the QT644 floor sensor pad into the other end of the HJR076 adapter

PLEASE NOTE: the HJR077 adapter will only fit into the left-hand socket

PLEASE NOTE: the HJR076 adapter will only fit into the right-hand socket



- Carry out a risk assessment to ensure this system is suitable for intended use and test system for correct operation each time before use.
- If using a seat pad and mattress pad only one can be in use at any time.
- Read the HJR075 alarm system instructions carefully.
- If you have any doubts about the above please contact Harvest Healthcare LTD

Stereo jack-plug

A stereo jack plug can be identified by the 2 black insulation bands

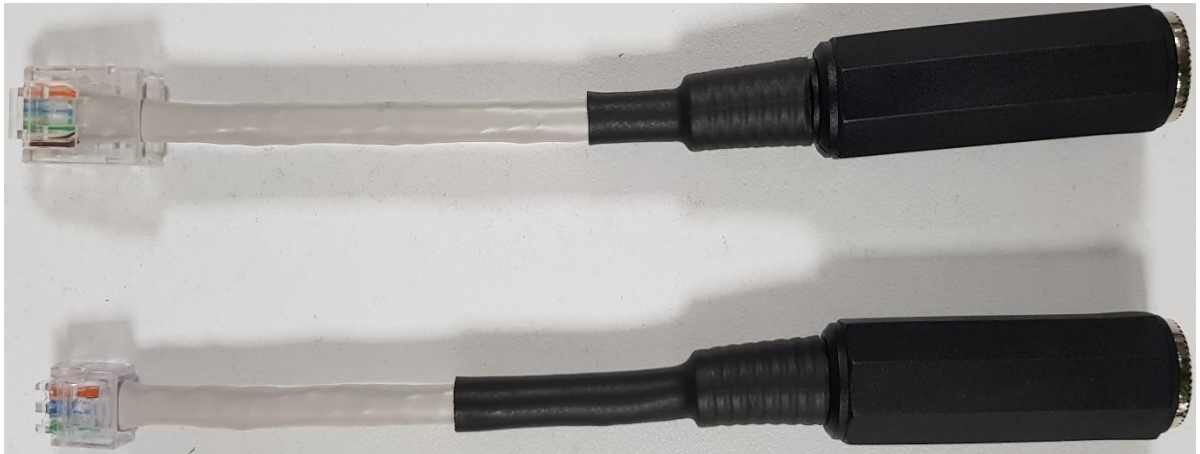


Mono jack-plug

A mono jack plug can be identified by the single black insulation band

HJRO77 ADAPTER

Used to connect the nurse call button to the nurse call system.



HJRO76 ADAPTER

Used to connect the sensor mats to the nurse call system

HJM309 CABLE

6.35MM mono jack-plug with 6.35mm mono jack-plug.

Used to connect the HJRO75 alarm system to the nurse call system



HJM330.S

6.35MM mono jack-plug with to nurse call button



HLV006 Y connector

6.35mm stereo jack-plug to 2 x 6.35mm sockets.

Used to connect either mat and nurse call button to nurse call system

Or seat and mattress sensors to nurse call system

